



**ICONIQ**  
ROOF LANTERN

**SOL**   
CONSERVATORY  
ROOFS LIMITED





# Meet the all-new Iconiq roof lantern

A revolutionary aluminium roof lantern designed to make your job easier and your work stand out. Made from premium materials and offering the fastest installation time on the market, Iconiq helps you complete projects more quickly.

Built with installers in mind, it's efficient, durable and easy to fit – meaning less time on-site and fewer maintenance issues. A high-quality product all round, Iconiq helps you win more work.

Plus, with its sleek design and exceptional performance, homeowners will love it too.

# The Q-lok advantage

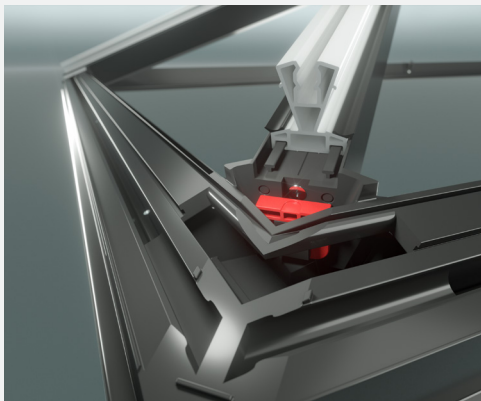
Less time on-site.  
Fewer headaches. More  
jobs done.

Eurocell's Q-lok system takes the hard work out of installation. Fewer fixings. Perfect connections every time. The ring beam, hip beam, ridge beam, and rafters all click together with precision.

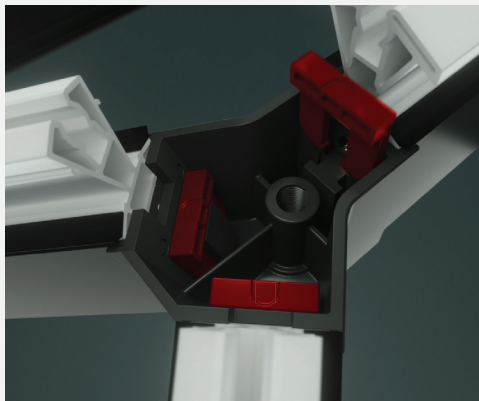


## Installation is effortless

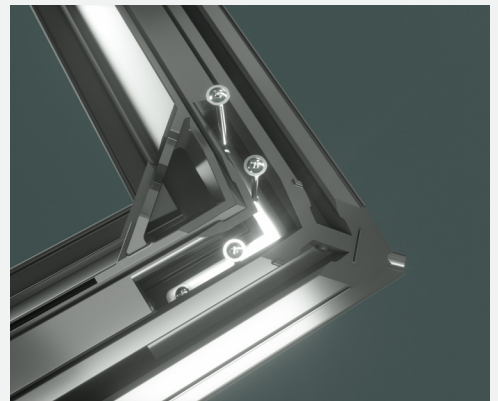
Thanks to our Q-lok system you can get it all done in under 1 hour and move on to your next job. No on-site drilling or silicone needed.



➤ Rapid-fit slide & lock connections

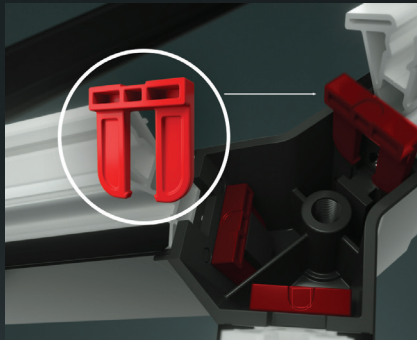


➤ Fit together in seconds



➤ Minimal fixings

# Iconiq at a glance

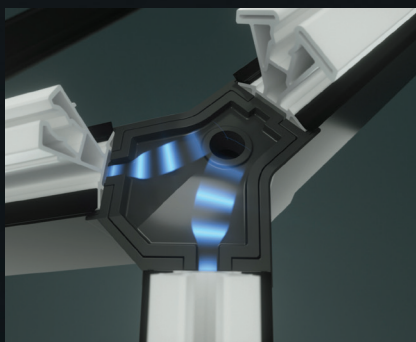
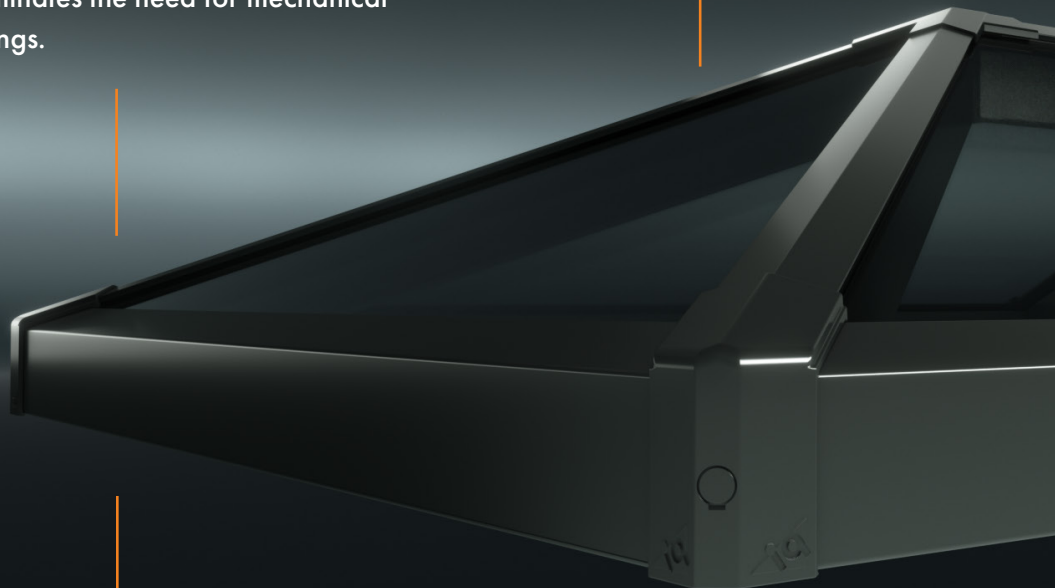


## Q-lok technology

Eliminates the need for mechanical fixings.

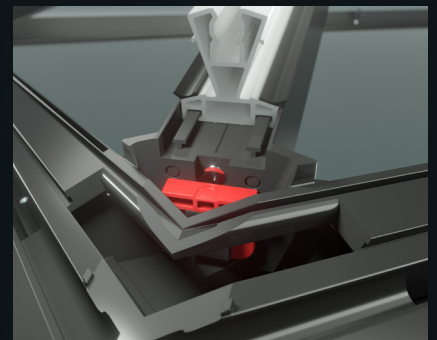
## Fast quotes, short lead times

Fast quotes with lead times tailored to your schedule. Tell us when you need it, and we'll make sure it's ready and on-site.



## Integral drainage for zero hassle

A unique, purpose-designed system prevents water ingress via the crown moulding, reducing the risk of call-backs.



## Slide & Lock

Precision connections fit together in minutes.



## Largest span

The strongest GRP ring beam on the market gives unmatched strength.

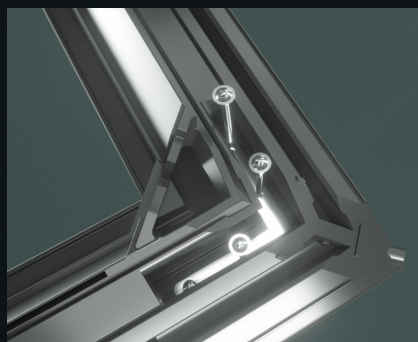


## Secure & built to last

Internally fitted glazing clips and interlocking eaves create a strong, secure structure. Anti-tamper screws and tapered frame edges add extra security for your customers' peace of mind.

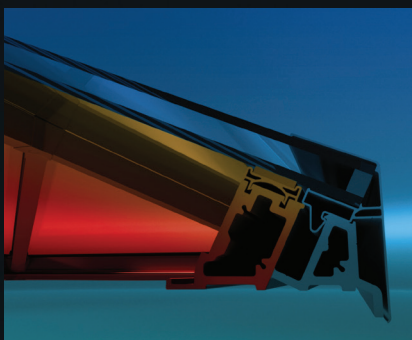
## 10-year Guarantee

Built to last and backed by a decade of durability. Sell with confidence, knowing your customers are covered.



## Minimal fixings

Simple installation.



## Energy efficient by design

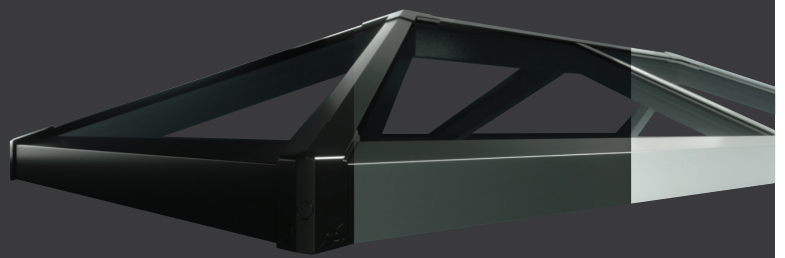
Our GRP thermally efficient ring beam and patented Q-lok system create an insulating barrier, making this the most thermally efficient lantern on the market - another great selling point.

# A spectrum of choice



## Colours for every customer

Available in Black, Anthracite Grey and White as standard. If your customers want something a little more bespoke, Iconiq can be sprayed with any RAL colour<sup>1</sup> and comes with a range of glass tint options.



### Frame colours



**MATT BLACK**  
RAL 9005



**WHITE**  
RAL 9003



**ANTHRACITE GREY**  
RAL 7016



**ANY RAL COLOUR**  
SPRAYED<sup>2</sup>

### Glass options



**CLEAR**  
LAMINATED



**NEUTRAL**  
TINTED



**BRONZE**  
TINTED



**AQUA**  
TINTED



**BLUE**  
TINTED

<sup>1</sup>Additional charge and extended lead times apply.



# Spans that demand attention

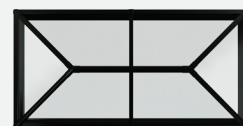
The strongest GRP ring beam on the market gives unmatched strength to weight ratio, allowing us to create the largest lanterns available on the market. You can take on bigger projects with confidence. More size options mean more opportunities to say yes to jobs, giving you greater flexibility and more satisfied customers.



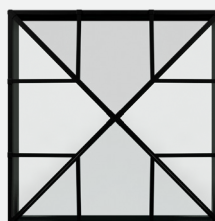
Up to 1.75m x 1.75m



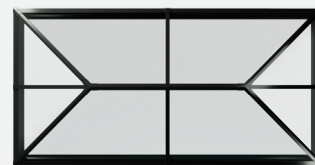
Up to 1.75m x 3m



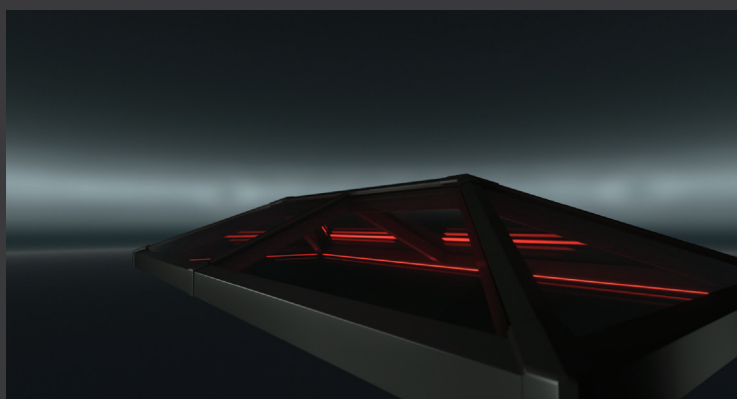
Up to 1.75m x 7.75m



Up to 3.5m x 3.5m



Up to 3.5m x 9.75m



## LED lighting

The integrated LED lighting tray allows customers to add lighting to their lantern and create a perfect ambiance throughout

<sup>2</sup>Lighting not supplied.

## Let there be light

Iconiq boasts a contemporary streamlined design giving the perfect blend of architectural structure and sky views. A sleek 25° pitch floods spaces with natural light, creating a bright and airy feel your customers will love.



### Self-cleaning glass

Whichever glass customers choose, every Iconiq has a hydrophilic coating as standard so the glass stays clearer for longer.



---

**0800 625 0123**  
**WWW.SOLROOFS.CO.UK**

